

The Miltanian



Ἀνδριζέσθαι

Vol. XIV. No. 1.

June, 1930

MILTON SCHOOL

BULAWAYO.

Headmaster:

Lieut.-Col. J. B. BRADY, D.S.O.

Staff:

Mr. J. A. Robinson.	Mr. N. F. Barlow.
Mr. T. Mitchell.	Mr. E. C. Hobrough.
Mr. A. D. Campbell.	Mr. W. G. H. Leonard.
Mr. J. H. Downing.	Mr. L. Jones.
Mr. B. R. N. Illoy.	Mr. H. J. Theron.
Mr. F. G. Jackson.	Mr. H. B. Dugmore (temporary).
Mr. G. T. I. Leonard.	Mrs. A. D. Campbell.
Mr. J. A. Mather.	Miss M. Godwin.

School Officers, 1930.

Head Prefect.—W. Wilson.

School Prefects.—W. Wilson, T. H. Sheffield.

House Prefects.—W. Wilson, J. Charsley, T. H. Sheffield, J. Abdela, N. Sreak, A. Garside, N. Ledeboer, N. Thal, R. A. G. Stupart, N. Robertson.

Cricket Coach.—Mr. G. W. Ledeboer.

Rugby Coaches.—Messrs. A. D. Campbell, J. A. Mather, H. J. Theron and F. W. Wunder.

Cadet Officer.—Capt. G. T. I. Leonard.

Cadet Lieutenants.—W. Wilson, T. H. Sheffield, N. Robertson.

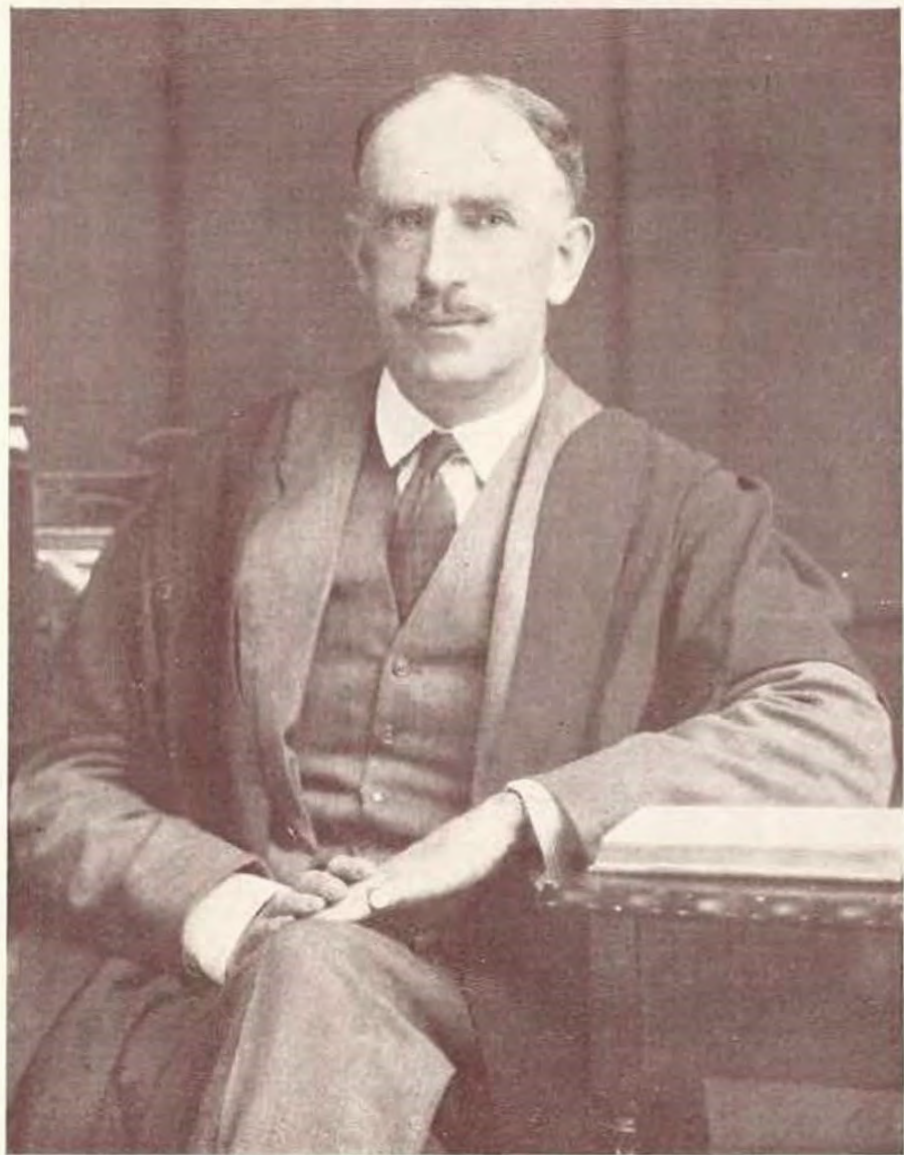
Games Committees (Cricket).—President, The Headmaster; Vice-President, Mr. A. D. Campbell; Hon. Sec., J. Burne; Capt., J. H. Charsley; Vice-Capt., W. Wilson.

(Rugby).—President, The Headmaster; Vice-President, Mr. A. D. Campbell; Hon. Sec., T. H. Sheffield; Capt., W. Wilson; Vice-Capt., J. H. Charsley; Extra Member, J. Burne.

(Swimming).—President, The Headmaster; Vice-President, Mr. F. G. Jackson; Hon. Sec., G. Burne; Capt., G. O'Connor; Vice-Capt., A. Garside.

(Athletics).—President, The Headmaster; Vice-President, Mr. F. G. Jackson; Hon. Sec., T. Posselt; Committee, S. Wolfe, R. A. G. Stupart, M. Meltzer.

(Tennis).—President, The Headmaster; Vice-President, Mr. Lewis-Jones; Hon. Sec., R. A. G. Stupart; Capt., L. Ross; Committee, R. Petheram, R. McPhee, T. Posselt.



Lieut.-Col. J. B. BRADY, D.S.O., M.A.
HEADMASTER OF MILTON SCHOOL — 1925-1930.

The Miltonian

Vol. XIV. No. 1.

JUNE, 1930

[4/- per annum.



Ἀνδριζεοθε

*Here is no ancient pile all shroued and shrouel
By centuries of rain and blasting storm,
Yet is the few short years since thou wast born,
No backward look thy spreading fame has mired,
Forth went thy sons when jealous races warred,
Died at Laheia, and 'mid Flanders' corn,
While Achi Dada grim and battle reurn
O'er Milton graves eternally keeps guard,
Proud were the van whose noble name you hear
Could he behold the inmates of your walls,
O'er half a continent thy summons calls
Fathers to place their sons in Milton's care,
Throughout this land thy cry rings loud and long,
"Oh, quit yourselves like men. Be strong, be strong!"*

EDITORIAL.

The departure of Col. Brady marks the close of an era in the School's history during which great strides have been made. It is our duty to endeavour to maintain the ideals for which he worked so hard, and one of the first steps in the direction of maintaining those ideals is for Miltonians, one and all, to welcome the new Head-

master, Mr. H. G. Livingston, in a spirit of determination to co-operate with him in his work here.

Mr. Livingston is a distinguished scholar in history and classics; we also rejoice in the fact that he is an old Miltonian, and that he is a rugged enthusiast. To Mr. Livingston and to his wife and family we extend a hearty welcome, and express the hope that their sojourn with us may be a long and happy one.

MILTON SCHOOL JUNIOR ATHLETIC TEAM, 1930.

WINNERS OF INTER-SCHOOL JUNIOR CHAMPIONSHIP.



Standing: R. BUDD.

E. OWEN.

R. BLACK.

Sitting: A. SMITH.

G. APLIN.

D. JOHNSTONE.

CRICKET NOTES.

Although the performances of the 1st XI did not compare too favourably with those of previous years, last season was on the whole a successful one.

The 1st XI beat Plumtree and Prince Edward's and lost the second Plumtree match.

There is plenty of promising material among the juniors—a happy augury for future years.

Mr. C. W. Ledeboer displayed his usual energy and enthusiasm in his coaching of the various XI's.

A happy innovation was the Under 15 match against Plumtree and some good cricket on both sides was seen in this game.

Results:

1st XI FIXTURES.

School vs. B.A.C.

On the B.A.C. Ground — October 12th and 19th, 1929.

B.A.C.: 119 and 143 for 3.

School: 222 for 6 declared (J. Burne, 78 not out; Coley, 41; Charsley, 39).

Won by 103 runs on the first innings.

School vs. Raylton.

On the School Ground — October 26th and November 2nd, 1929.

Raylton: 187 (S. Wolffe, 7 for 47).

School: 174 (Charsley, 45; Coley, 34).

Lost by 13 runs.

School vs. B.A.C.

On the School Ground — Nov. 16th, 1929.

B.A.C.: 152 for 7.

School: 93 for 4 (Wilson, 40 not out).

Match drawn.

School vs. B.A.C.

On the School Ground — Nov. 23rd, 1929.
B.A.C.: 134.

School: 178 for 3 (Charsley, 78; Coley, 36 not out; J. Burne 31).

Won by 44 runs on the 1st innings.

School vs. Queen's.

On the School Ground — Nov. 30th, 1929.

Queen's: 27 (S. Wolffe, 4 for 11) and 36 (S. Wolffe, 5 for 17).

School: 60 for 2 declared and 88 for 4.
Won by 10 wickets.

School vs. Defence Force.

On the School Ground — Dec. 6th, 1929.

Defence Force: 113 (J. Burne, 3 for 2).

School: 114 (J. Burne, 40).

Won by 1 run.

School vs. B.A.C.

On the School Ground — February 8th and 15th, 1930.

B.A.C.: 136 (J. Burne, 4 for 11) and 119 (Charsley, 6 for 50).

School: 123 (J. Burne, 44; Charsley, 40) and 123 for 8 (Charsley, 60).

Lost by 13 runs on the first innings.

School vs. Raylton.

On the Raylton Ground — Feb. 22nd, 1930.

Raylton: 240.

School: 51 for 1.

Match drawn.

School vs. Queen's.

On Queen's Ground — March 8th, 1930.

Queen's: 141 for 6.

School: 103 for 3 (Charsley, 63 not out).

Match drawn.

School vs. Mr. Barlow's XI.

On the School Ground — March 12th, 1930.

Mr. Barlow's XI: 144 for 6.

School: 58 for 1 (Clarkson, 30 not out).

Match drawn.

School vs. Old Miltonians.

On the School Ground—March 22nd, 1930.

O.M.'s: 109 for 6.

School: 189 for 8.

Match drawn.

The School vs. Plumtree.

On the Queen's Ground—November 8th and 9th, 1929.

This, the first inter-school game of the season, resulted in a victory for the School by the substantial margin of an innings and six runs.

Plumtree batted first and met with early disaster when Garrett was dismissed with only 9 runs on the board; thereafter wickets fell at fairly regular intervals, the only stands of note being a fourth wicket stand of 38 and a gallant ninth wicket partnership of 44. Plumtree were all out for the moderate score of 151. For Plumtree, Davey, (33) and Hanson (31) were the most successful batsmen, while Wolffe in taking 5 for 49 bowled well for the School.

The School's start was not too auspicious, three wickets falling for 39 runs; Thal and Coley carried the score to 79 before the latter was out for 25 runs. The next stand of importance was a sixth wicket stand of 52 runs, while the 8th wicket partnership added 40 runs. Thanks to a fine 56 by Thal and consistent batting by the other members of the team, the School made 240 runs, thus gaining a valuable lead of 89 runs.

This, as events turned out, proved to be a sufficient lead to ensure an innings victory, for due to some fine bowling by Wolffe, ably backed up by Garside and Charsley, Plumtree were

dismissed for only 83 runs. Anderson, going in ninth, made a gallant effort to save the innings defeat by scoring 43 runs.

Thus a match, characterised by that keenness and enthusiasm which one has come to associate with these Milton-Plumtree encounters, ended in victory for the School by an innings and six runs.

PLUMTREE—1st Innings.

Plumb, b Wolffe	2
Garrett, c and b Wolffe	6
Hanson, l.b.w. Charsley	31
Napier, c Ingram b Wolffe	6
Davey, b Coley	33
Wilnot, c Wilson b Coley	3
Walker, c Clarkson b Wolffe	8
Lanning, c Skinner b Wolffe	6
Anderson, b J. Burne	21
Ledeboer, not out	21
Howman, l.b.w. J. Burne	0
Extras	14
	<hr/> 151

MILTON—1st Innings.

Charsley, b Napier	23
Wilson, l.b.w. Davey	8
Coley, l.b.w. Howman	25
Burne, J., l.b.w. Napier	0
Thal, l.b.w. Hanson	56
Wolffe, l.b.w. Napier	15
Skinner, c Hanson b Walker	26
Garside, b Napier	29
Ingram, not out	25
Clarkson, c Davey b Walker	9
Burne, G., c and b Walker	4
Extras	20
	<hr/> 240

PLUMTREE — 2nd Innings.

Napier, c Skinner b Wolffe	0
Hanson, c Ingram b Charsley	3
Lanning, l.b.w. Wolffe	1
Davey, c Ingram b Garside	0
Garrett, c Charsley b Wolffe	13
Ledeboer, c and b Wolffe	3
Walker, b Garside	2
Plumb, c Wolffe b Garside	0
Anderson, b Burne, G.	43
Wilmot, b Charsley	3
Howman, not out	1
Extras	5

83

The School vs. Plumtree.

On the Plumtree Ground — March 14th and 15th, 1930.

In the second match of the season the School suffered defeat by 43 runs, after a great match which illustrated the glorious uncertainty of cricket.

Plumtree batted first and scored 167 runs to which Plumb contributed an excellent 64. For the School, Garside with 4 for 39 was the most successful bowler.

We fared little better than Plumtree in the first innings and were all out for 178 runs—J. Burne was top scorer in this innings with 36.

Plumtree scored 162 runs in their second innings, Lanning contributing 67. At one stage Plumtree had lost 6 wickets for only 35 runs, but the "tail wagged" to some effect, the last four wickets adding 130 runs.

Left to make 155 to win, the School batsmen failed badly, Napier of Plumtree claiming 6 wickets for 41 runs. A good effort by our tail-end batsmen

saved us from a heavier defeat, for at one time seven wickets were down for 41. The innings closed eventually for 111 leaving Plumtree victors after a stirring game by 43 runs.

The fielding of the School XI was excellent in this game, while the match was fought out by both sides to the bitter end in the best spirit of friendly rivalry.

PLUMTREE — 1st Innings.

Wilmot, l.b.w. Charsley	6
Plumb, b Garside	64
Hanson, c Garside b Burne, J.	9
Napier, c Wolffe b Garside	20
Ledeboer, run out	1
Walker, R., b Wolffe	0
Lanning, c and b Garside	21
Garrett, c Wolffe b Garside	12
Anderson, c Ingram b Charsley	8
Walker, R., not out	10
Howman, b Charsley	0
Extras	4

167

MILTON — 1st Innings.

Charsley, c Lanning b Napier	4
Wilson, c Walker b Hanson	10
Ingram, c Howman b Walker, R.	30
Burne, J., c Ledeboer b Napier	36
Garside, b Napier	24
Thal, not out	19
Wolffe, c Howman b Napier	16
Skinner, c Howman b Lanning	5
Stepart, run out	2
Ledeboer, b Napier	0
Burne, G., st. Wilmot b Napier	0
Extras	52

178

PLUMTREE — 2nd Innings.

Plumb, b Charsley	1
Wilmet, l.b.w. Charsley	1
Garrett, run out	21
Hanson, b Wolffe	6
Napier, run out	15
Ledeboer, b Wolffe	1
Garrett, R., c Garside b Wolffe	0
Lanning, l.b.w. Wolffe	17
Anderson, b Garside	31
Walker, R., b Charsley	9
Howman, not out	5
Extras	5

165

MILTON — 2nd Innings.

Charsley, c Plumb b Napier	3
Wilson, c Anderson b Lanning	6
Ingram, run out	5
Burne, J., c Anderson b Napier	3
Garside, c Lanning b Napier	20
Thal, b Napier	1
Wolffe, b Lanning	0
Skinner, b Napier	32
Stupart, not out	20
Ledeboer, l.b.w. Napier	0
Burne, G., l.b.w. Hason	11
Extras	10

111

The School vs. Prince Edward's.

On the Queen's Ground—March 27th, 1930.

In this, a one day match, the School beat Prince Edward's by 75 runs on the first innings. Prince Edward's batted first and were dismissed for 125, Slocock making a good 40 for the visitors. Wolffe with 4 wickets for 27 was the most successful School bowler. Bad catching was a feature of the School's fielding.

The School equalled Prince Edward's score with only three wickets down, and then went on to make 200 runs, Wilson 66 and Clarkson 32 being the chief scorers. For the visitors K. Tait, who took 4 wickets for 25 runs, bowled well.

In their second innings Prince Edward's had lost 5 wickets for 18 runs when stumps were drawn.

PRINCE EDWARD'S — 1st Innings.

Wilson, c Ingram b Wolffe	8
Tait, A., c Wilson b Thal	18
Tulley, A., c Charsley b Wolffe	5
Slocock, c Wolffe b Thal	40
Olver, c and b Garside	23
Huddy, b Wolffe	1
Tulley, C., c Ingram b Garside	0
Whaley, not out	4
Drakes, c Wolffe b Stupart	9
Tait, K., b Stupart	0
Giles, c Wilson b Wolffe	2
Extras	15

125

MILTON — 1st Innings.

Wilson, c and b Tait, K.	61
Ingram, l.b.w. Tulley	15
Burne, J., b Tait, K.	18
Charsley, b Slocock	13
Garside, b Slocock	8
Thal, c Tulley, A. b Tait, K.	0
Wolffe, c Tulley, C. b Tait, K.	10
Clarkson, b Slocock	32
Skinner, l.b.w. Olver	3
Stupart, c Slocock b Tulley, C.	6
Burne, G., not out	7
Extras	16

200

PRINCE EDWARD — 2nd Innings.

Wilson, c Thal b Garside	1
Tait, A., c Ingram b Charsley	0
Whaley, L. b. Wolfe	8
Tulley, A., b Garside	0
Tulley, C., c Wilson b Garside	3
Drakes, not out	1
Extras	5

For 5 wickets 18

The School 2nd XI played the following games:—

21st February, 1930 vs. Plumtree at Plumtree. Won by 80 runs.

Plumtree 1st Innings: 70 (Streak, 3 for 4; Barnett, 3 for 19).

School 1st Innings: 130 (Posselt, 51; King, 39; Barwell, 27).

Plumtree 2nd Innings: 90 (Hammond 42; Meltzer, 4 for 9; Streak 4 for 33).

8th March, 1930 vs. Plumtree at the B.A.C. Won by 24 runs.

Plumtree: 95 (Meltzer, 4 for 22; Barnett 3 for 20).

School: 119 (Clarkson, 61; Rathuly, 4 for 21).

12th March, 1930 vs. Chaplin at Milton.

Chaplin 1st Innings: 114 (Richards, 42; Streak, 3 for 19; Barnett, 3 for 21; Clarkson, 3 for 20).

School 139 (Clarkson 55).

Won by 25 runs.

Matches played by the 3rd XI:—

vs. Plumtree at Milton.

Plumtree: 46 and 89 for 7.

School: 84 and 90.

Won by 38 runs on the first innings.

vs. Plumtree at Plumtree.

Plumtree: 180 for 6.

School: 99.

Lost by 81 runs.

Matches played by the Under 15:—

Plumtree: 114 and 24 for 6.

School: 129.

Won by 15 runs on the first innings.

VISIT OF MR. H. W. TAYLOR.

During the recent Currie Cup cricket match between the Transvaal and Rhodesia the School was privileged to hear Mr. H. W. Taylor give a brief talk on cricket.

Mr. Taylor was accompanied by several members of the Transvaal team, including V. N. Hepker an Old Boy of the School.

South Africa's master batsman illustrated in the course of his remarks how the various fundamental cricket shots should be played. The ease and grace with which he executed the strokes was the envy of every cricketer in the hall.

We take this opportunity of thanking Mr. Taylor for his very interesting and instructive address.

MILTON SCHOOL 1st XI, 1929-1930.



SEATING: Left to Right
Front Row.—J. D. K. BURNE,
S. L. WOLFFE.

J. H. CHARLESLEY,
(Captain)

Colonel J. B. BRADY,
(Headmaster)

W. E. J. WILSON,
(Vice-Captain)

STANDING: Left to Right,
Back Row.—R. A. G. STUPART.

H. SKINNER,
K. CLARKSON.

A. H. GARSIDE,
G. H. BURNE.

N. THAL.

C. B. INGRAM.

RUGBY NOTES.

With ten of last year's XV still at School, we look forward to a successful season. There is plenty of enthusiasm among the juniors which is always a good sign.

So far the following matches have been played:—

- 1st XV vs. Old Miltonians.
 Won 12—10.
 vs. Raylton's 11 XV.
 Lost 8—14.
 vs. Plumtree. Won 8—7.
 vs. B.A.C.'s 2nd XV.
 2nd XV vs. Queen's. Won 56—0.
 Queen's very sportingly
 took the field with only ten
 men in this match.
 vs. Chaplin. Won 41—0.
 vs. Matopos. Won 11—0.
 Under 15 XV vs. Chaplin. Won 6—0.
 vs. Plumtree. Lost 3—6.

THE SCHOOL vs. PLUMTREE.

June 20th at Plumtree.

Semi-Final, Honey Cup — Won 8—3.

The School won its first match against Plumtree this season by eight points to three. From the kick-off the result was never in doubt and it was only the sound defence of the Plumtree backs and the untiring efforts of their forwards that prevented a run-away victory.

The School's threequarters were always superior and save for a spell in the second half when our forwards were beaten in the loose Plumtree never looked like scoring.

Plumtree kicked off with the wind

and early in the game the Milton threequarters were hammering their line with repeated attacks. Eventually Wolfe broke cleverly and with the forwards in support passed inside to Fisher who scored near the posts. The kick was converted.

The second half began with Milton pressing hard, but indifferent handling and forward passes kept the score unchanged. The forwards were getting the ball from the scrums and though the backs were continually on the move the wings were never given a chance. Finally Gruber scored an unconverted try from a five yards' scrum. The School forwards now began to slacken and play was transferred to Milton territory, where the lack of thrust of the Plumtree backs prevented them from scoring.

With play once more on the Plumtree line, Gaul, their wing, cleverly intercepted and after a great individual effort scored a try. The kick failed and shortly afterwards the match ended.

The following is an extract from an essay on "The Renaissance" written by a I—Removite—

"The people that first went to Natal arrived there on the Birth of God. Then they named it Renaissance.

Renaissance means the birth of God. When Constantinople was teaching the people how to read and write, he was captured. Learning started to die off. Then it started to travel West and East. They gave Natal the name in the year 1487."

... and still the wonder grew

That one small head could carry all
 he knew!

MILTON SCHOOL SENIOR ATHLETIC TEAM, 1930.

WINNERS OF INTER-SCHOOL CHAMPIONSHIP.



Standing: M. BARNES. C. VOGEL. N. THAL. N. LEDEBOER. B. LEDEBOER. R. PETHERAM.
A. JACKSON. W. ATHERSTONE.
Sitting: A. GARSIDE. M. MELTZER. G. HARTWELL.